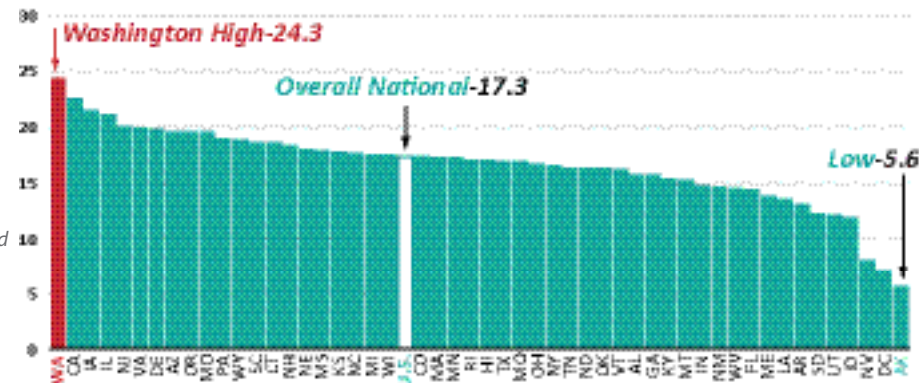


Washington's 4-Year Public College and Universities are the Most Productive Degree Producers in the Nation.

Washington leads the nation in bachelor's degree production by public baccalaureate institutions

Bachelor's degrees, 2005-06, per 100 undergraduate students, Fall 2005, public baccalaureate institutions

Sources: U.S. National Center for Education Statistics Integrated Postsecondary Education Data System preliminary data 1/09/09, Education Research & Data Center, OFM

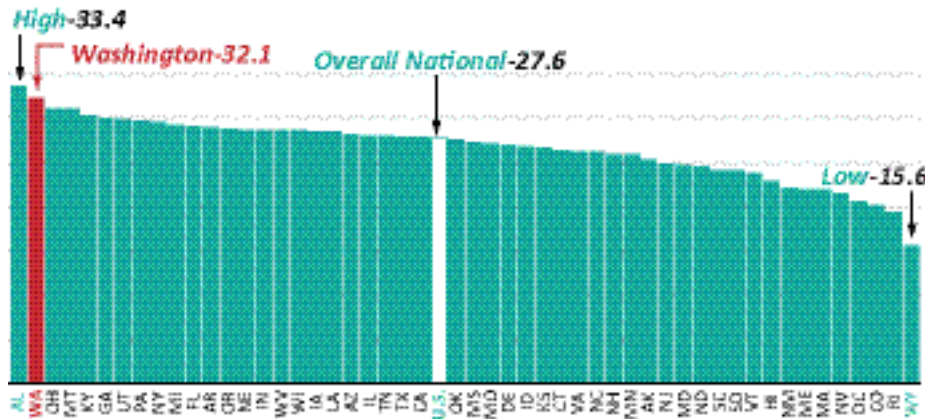


Washington ranks 2nd in the nation in graduate degree production by public baccalaureate institutions

Washington ranks 2nd in the nation in graduate degree production by public baccalaureate institutions

Graduate degrees, 2005-06, per 100 graduate students, Fall 2005, public baccalaureate institutions

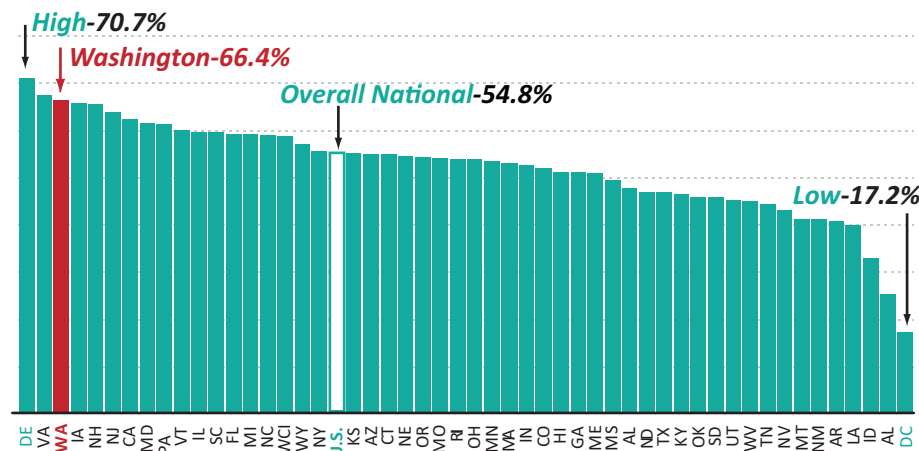
Sources: U.S. National Center for Education Statistics Integrated Postsecondary Education Data System preliminary data 1/09/09, Education Research & Data Center, OFM



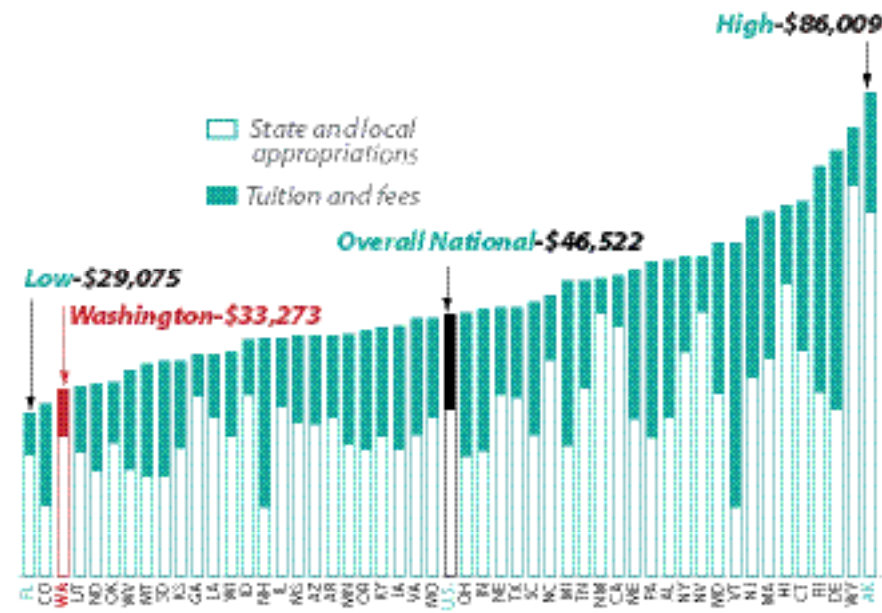
Washington ranks 3rd in degree completion at public baccalaureate institutions

Percent of Fall 2001 freshman cohort graduating with a bachelor's degree within 6 years, public institutions

Sources: U.S. National Center for Education Statistics Integrated Postsecondary Education Data System preliminary data 1/09/09, Education Research & Data Center, OFM



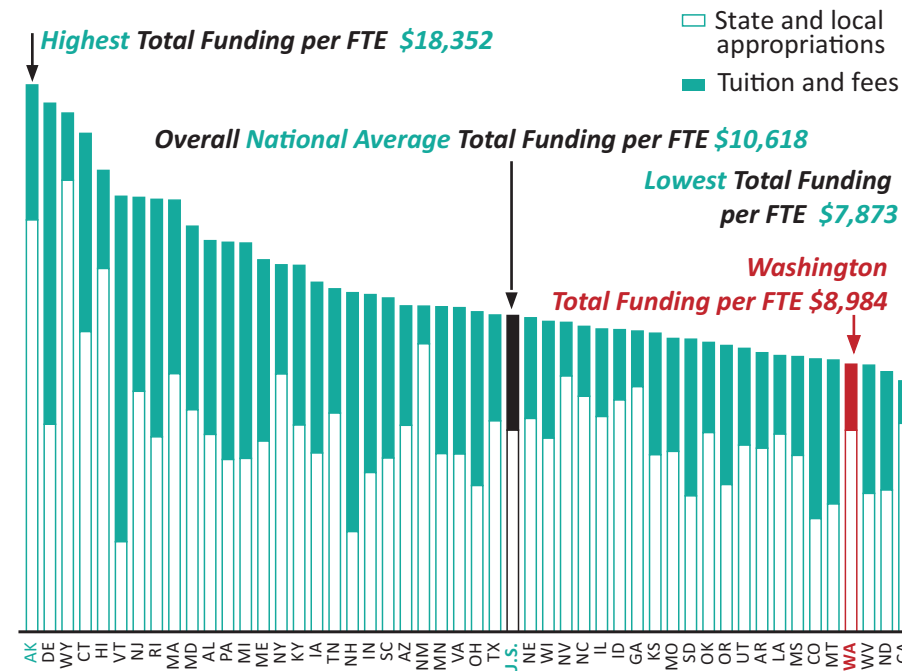
Washington's 4-Year Public College and Universities are an Excellent Return on the State's Investment



Total funding per degree/certificate (weighted, 2006-2007)

Data adjusted for value of degrees and certificates in the state employment market (median earnings by award type and level).

Source: SHEEO State Higher Education Finance Survey 2008; NCES, IPEDS Completions Survey; U.S. Census Bureau, American Community Survey, Public Use Microdata Samples



Total funding per FTE student by state and student share (2006-2007)

Source: SHEEO State Higher Education Finance Survey 2008

Washington experienced the steepest percentage decline in the nation in higher education revenues per FTE student (state and local support plus tuition in constant dollars) from 1991 to 2005.

Washington ranked 46th in the nation in total higher education funding per FTE student in 2006-2007.

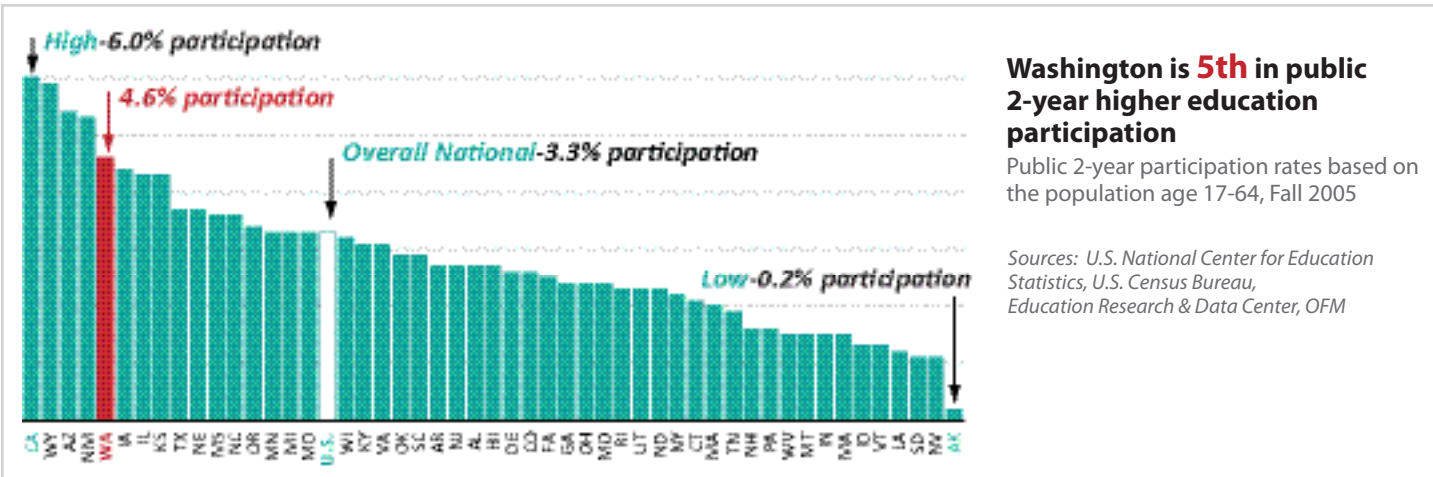
(Kelly 2009)

The cost of producing a degree or certificate in Washington is the third lowest in the nation, nearly \$13,000 below the national average.

(Kelly, 2009)

Washington's Challenge: To enroll more Washington citizens in baccalaureate institutions to earn degrees that will sustain our economy.

Washington's 4-Year Public College & Universities: Leading the Nation

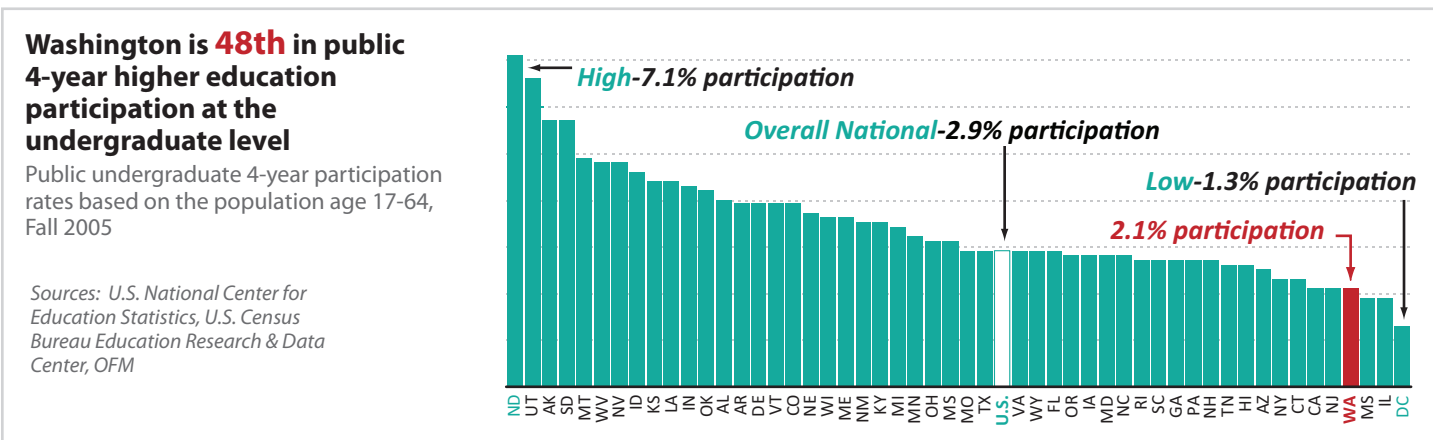


Higher education is the foundation upon which we will continue to build our state's innovation economy and position Washington to be globally competitive. Our economy relies on the rigorous fundamental and applied scientific research, combined with teaching and learning, that is uniquely at the center of the baccalaureate mission. Baccalaureate institutions provide the highest quality learning experiences that prepare our students to become leaders and innovators in this global economy.

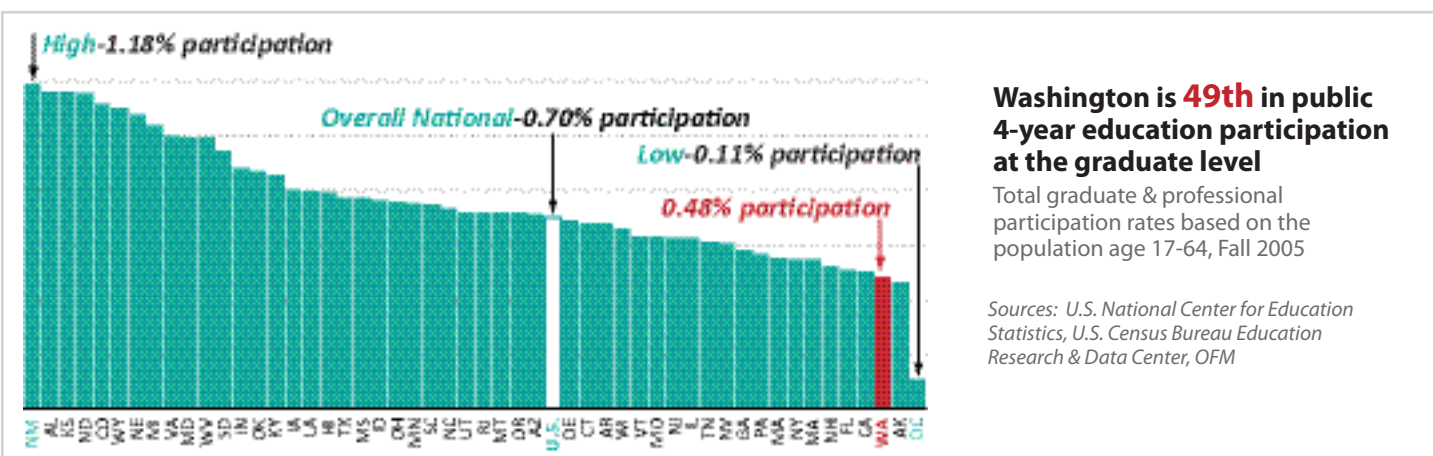
— Council of Presidents

Washington's Success Story

Through the guidance of the legislature and the determined efforts of our higher education institutions over the last two decades, our public baccalaureate sector is now one of the most productive and efficient in the nation- despite being one of the least state funded. Washington's public baccalaureate institutions have demonstrated continual improvements in degree completion and productivity, making Washington one of the best performing states in the country in producing degrees relative to state investments. (Kelly, 2009)



- Washington's comprehensive institutions, and Evergreen, were rated number one in the nation in completion and degree productivity relative to funding per FTE. (Kelly and Jones, 2005)
- Our public research institutions award more bachelor's degrees per FTE student than research institutions in any other state.
- Washington is 2nd in the nation in degree productivity at the graduate level. (IPEDS)
- Our freshmen retention rate is among the highest in the nation. (IPEDS)
- Our six-year graduation rate for first-time freshmen ranks 3rd in the nation and has improved by 9% in the last decade. This means 1,350 more of the freshmen class entering our campuses today will earn bachelor's degrees than they would have 10 years ago. (IPEDS)



KEYS TO SUCCESS

- LEADERSHIP** by the Governor, Legislature and our 4-Year Higher Education Institutions
- RESPONSIBLE STEWARDSHIP** of the State's Baccalaureate assets and resources
- FOCUSED ENGAGEMENT** to address Washington's goals, challenges, and economic vitality
- PARTNERSHIPS & COLLABORATIONS** among sectors, institutions, agencies, businesses, and communities