



CENTRAL WASHINGTON UNIVERSITY

EASTERN WASHINGTON UNIVERSITY

THE EVERGREEN STATE COLLEGE

UNIVERSITY OF WASHINGTON

WASHINGTON STATE UNIVERSITY

WESTERN WASHINGTON UNIVERSITY

WASHINGTON STATE

Council of
Presidents

**Washington Council
Fall Counselor Workshop
September 2021**

Julie Garver
Senior Director of Policy and Academic Affairs



Diversity, Equity, and Inclusion

The Council of Presidents stands in solidarity with all those across our nation who experience discrimination, bigotry, prejudice, violence, and hate due to their race, ethnicity, national origin, sexual orientation, gender identity or expression, disability, age, religion, and socioeconomic status.

We remain actively committed to continuing and advancing efforts to promote greater diversity, equity, and inclusion on our campuses that align with their missions to serve Washington residents and the local communities in which they reside.

Our work is grounded in the belief that faculty, staff, and students benefit from a vibrant, rich learning community composed of a broad cross-section of individuals of all different perspectives. Success in an interdependent, globally connected world depends critically and urgently on our ability to foster equity of access and outcome related to our 21st Century ideals of opportunity and discovery.



We Serve an Increasingly Diverse Student Population



74,513
Direct from
High School
Students

50%
Identify as
people of
color

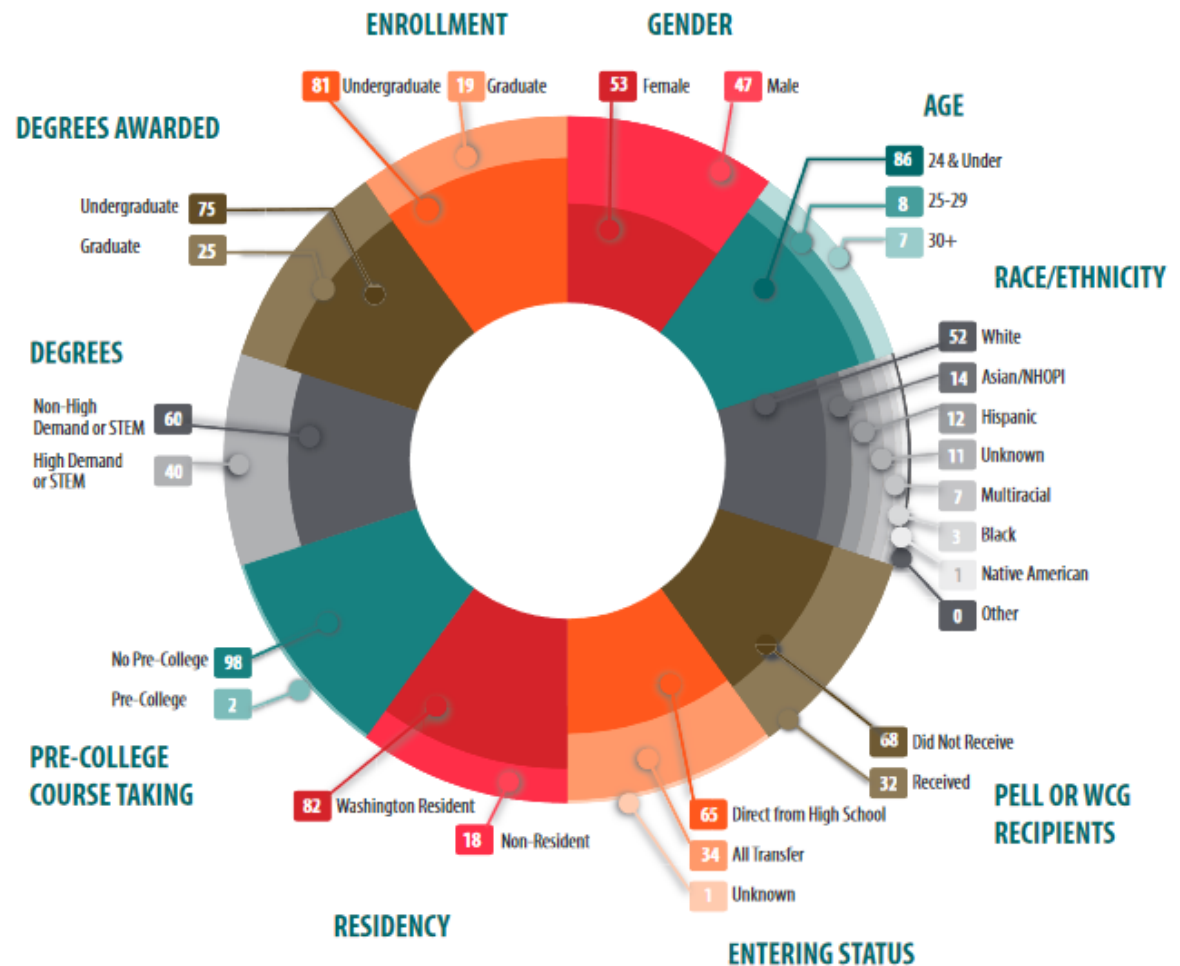
54% female
and 46%
male

20%
Received
Need-Based
Aid

We Have a Strong Commitment to Degree Completion

- Rank in the **top 10** for best five- and six-year graduation rates and in the **top 20** for four-year in the nation.
- The average length of time to complete a bachelor's degree across our sector is **four years**.

What Would Washington Look Like as 100 College Students?



Source: Washington Education Research & Data Center

We are National Higher Education Leaders

- **CWU** was ranked as **one of the top 10** Best Value Colleges in the state of Washington in 2021.
- **EWU** ranked **1st** for most affordable LGBTQ-Friendly School in Washington.
- **Evergreen** ranked as the **1st** most innovative college for regional universities in the west by U.S News & World Report.
- **UW** ranked as **16 in the world** and **3 among U.S. public universities** in the 2020 Academic Ranking of World Universities.
- **WSU** ranked as a **top performer** on social mobility by U.S. News & World Report.
- **WWU** receives **First-Gen Forward designation** for commitment to first-generation college students by the Center for First-generation Student Success.

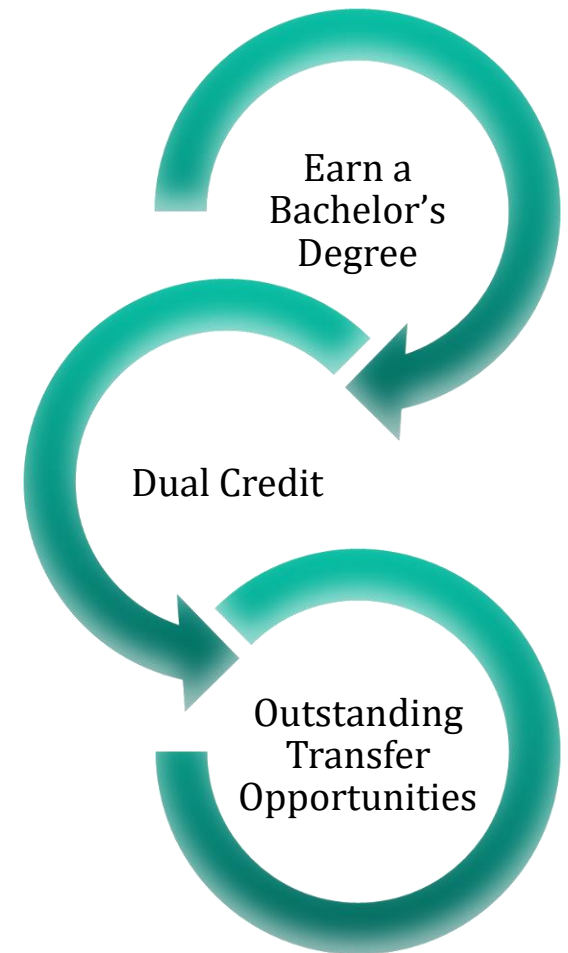
We Play a Critical Role in Washington

Earn a Bachelor's Degree or Higher

- Largest provider of the state's bachelor degrees.
- In 2018-19, served more than 140,000 students and awarded over 50,000 bachelor's and graduate degrees.
- Eighty-two percent of undergraduate students are Washington residents.

Experience, Exposure, Exploration

- Provider of College in the High School and Running Start.
- Award credit for all six dual credit program in Washington.
- Value all dual credit programs equally.



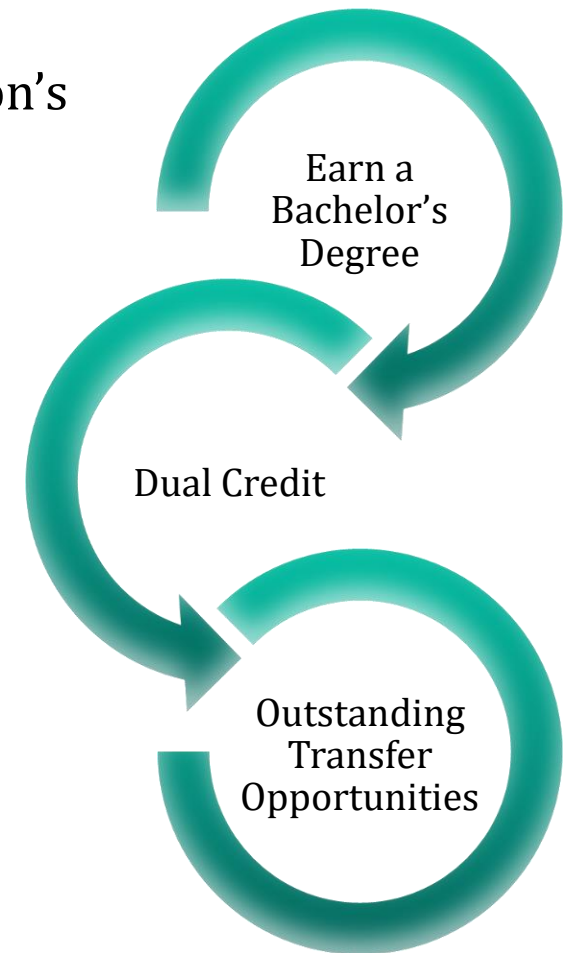
We Play a Critical Role in Washington

Opportunities to **Transfer**

- Statewide transfer agreements between Washington's four-year institutions and community and technical colleges.
- Hundreds of articulation agreements between institutions for academic and professional technical Associate Degrees.

Opportunities for **Learning**

- Committed to serve the STEM goals of Washingtonians and the state's economy.
- Strong opportunities to learn, earn a degree and have a career in the liberal arts.
- Wide range of international study opportunities.
- Strong online learning options.



We are an Affordable Option

- In 2018-19, Washington public four-year institutions ranked in the **bottom 10 states** for average undergraduate tuition and fees among all states.
- More than **one third** of undergraduate students enrolled received a Pell Grant or Washington College Grant.
- **Half** of the Class of 2019 graduated from a Washington baccalaureate degree-granting institution with no student loan debt.

The Ten States with the Lowest Average Student Loan Debt Levels

Utah	\$17,935
New Mexico	\$20,991
Nevada	\$21,254
California	\$21,485
Wyoming	\$23,444
Hawaii	\$23,577
Florida	24,629
Washington	\$24,645
Arizona	\$24,712
Louisiana	\$25,512

The State's Largest Provider of Bachelor's Degrees

Demand for workers with postsecondary credentials **is higher** than it has ever been.

- According to a recent survey, **96%** of high school students in the south King County region want to go to college to pursue a fulfilling career; **72%** of students specifically hope to obtain a four-year degree.
- Out of the 11.6 million jobs created in the post-recession period from 2010-2016, 8.4 million or more than **72%** required a bachelor's or advanced degree.



Source: Community Center for Education Results: "Let Us Succeed: Student College & Career Aspirations" and Georgetown Center on Education and the Workforce: America's Divided Recovery: College Haves and Have-Nots.

Workforce and Economic Development

- Washington's public baccalaureate institutions are **directly engaged with businesses and employers** to identify knowledge and skills necessary to meet the economic needs of the state.
- As a sector, we **partner** through discipline-focused advisory groups with businesses and employers and collaborate with students to showcase skills and experience through dynamic transcripts, career advising and applied learning to simultaneously gain experience, knowledge and skills.
- Our member institutions are **major drivers of economic** growth.
- Together we **create prosperity and innovation** in communities throughout Washington.

College Graduates Benefit Our Entire State

The bachelor's degrees or higher earned by our students are associated with **increased lifetime earnings, lower unemployment rates, lower incidences of poverty, better health outcomes, longer life expectancy and higher rates of civic and social engagement.**



Dynamic Contributors for Current and Future Careers

Washington's public four-year college and universities continue to actively engage in the development and review of education pathways and credentials that **lead to degrees and outcomes to respond effectively to the changing demands in the workplace, today and in the future.**



2021-22
Academic
Year

Planning for the Fall 2021 Term

- Our campuses are planning for primarily **in-person instruction** while providing opportunities for those who want to learn remotely.
- We also expect the return of many more students to campus residences, and the resumption of more normal in-person **services and activities**.
- All institutions have announced **mandatory COVID-19 vaccine requirements** with allowable exemptions.
- Institutions are setting **mask policies** that incorporate federal, state, and local public health directives and standards.
- Protecting the health of our students, faculty, and staff will continue to guide our decision-making in the coming months. **Our students' learning, personal well-being, and life success remain our top priority.**
- Please encourage students who have questions – ranging from admissions to housing and dining to technology to financial aid – to reach out with questions or concerns. **We are here to help!**



Updates

Holistic Assessment of Applications for Admissions

- Our institutional admissions review processes consider the **whole student**.
- **Holistic admissions** consider grades, courses – both the type and the level at which taken - and assessments, along with other information to make an admissions decision. This may include leadership in activities outside of the school environment or other examples a student may provide.
- Reviewed and finalized **WSAC Admissions Policy Standards**. Effective August 1, 2021. Revisions include:
 - Extends pandemic admission flexibility
 - Adds clarity to practices, process and policies
 - Adds context for emerging issues including test optional, holistic admissions, mastery-based learning, guaranteed admissions and dual credit.
 - Creates an annual review process.
- The First-Year Student Admission Standards Policy aligns with **institutional holistic admissions** in the following ways.
 - Every application goes through a holistic assessment process, even if the student applying has not met the admissions standards policy.
 - If a student has not met the College Academic Distribution requirements, the student can still be offered provisional acceptance to an institution and make up coursework in the first year of college.
 - Students have flexibility within the standards.

Permanently Test Optional

Beginning fall 2021, all Washington public baccalaureate institutions permanently test optional.

Students will **not be penalized** during the admissions process or student eligibility for institutionally supported scholarships, course placement or admissions to Honors programs.

Test Optional Policies may include

Test Optional: Students may choose to submit test scores to strengthen an application. Submission of a test scores does not disadvantage or advantage students in the admission review process if a student chooses not to submit. In place of a test score, students who choose to apply as test-optional will be required to submit additional and alternative measures of college readiness.

Test Blind: Test scores are not looked at or considered at any point in the admissions review process, even if a student chooses to submit a test score. No additional, alternative measure of college readiness is required in place of a test score.

Test Not Required: Test scores are not considered in the admissions review process, even if a student chooses to submit a test score (see test blind above). However, test scores are considered for placement, entry into Honors program, and/or scholarship awards.

Guaranteed Admissions Pilot Program

We, in partnership with our communities, are committed to meeting the college and career goals of Washington's students. Focused on increasing access and credential completion in Washington, many of Washington's public baccalaureate institutions offer guaranteed admissions programs for students who meet set criteria.

Institution led **Guaranteed Admission Pilot Program**, Academic Year 21-22 for five of Washington's public baccalaureate institutions.

Students

- When a student **meets a set** of institutionally identified criteria, a student is guaranteed admission to the baccalaureate institution.
- Students **must apply** to the institution and complete additional steps as required by the college or university that will be outlined in the letters sent to students from institutions.
- Students are **encouraged** to engage in challenging coursework and maintain their GPA during their senior year.

Districts/Schools

- **Connect** with a participating institution.
- **Complete** a data sharing agreement and memorandum of understanding.
- Connect and commit to the Pilot by **October 15, 2021**

Joint Higher Education Initiative to Increase College Going in Washington

A joint initiative to increase the college-going culture and awareness in Washington with Washington public and private baccalaureate institutions and community and technical colleges.

The goal is to increase the number of Washingtonians with a credential to meet workforce and state needs.



Key Takeaways

- We are excited to welcome Washington students to any one of our public four-year college or universities. **We want you!**
- Washington's public four-year college and universities offer terrific options available in your own backyard. **Let's Grow Our Own in Order to Meet Workforce and State Needs.**
- **Your students are our students.** We are committed to serve all students with a focus on identifying and reducing gaps among student populations.

Challenging High School Coursework

- Washington's public baccalaureate institutions **believe college is for everyone** that wants to go.
- **College requires preparation**, commitment and organization. Preparation for college includes participation and completion of challenging and advancing high school curriculum.
- **Advanced courses are a way students** can explore the intersection of their academic and personal interests and begin to prepare for life after high school and develop a sense of self.
- Together Washington's public baccalaureate institutions **recognize multiple high school paths** and programs which provide:
 - College and preparatory college experiences for students in high school.
 - Emphasize the role and value of learning.
 - Support access to, enrollment in and successful completion of rigorous coursework in high school.
 - Address issues of equity and access.
 - Encourage intentional participation, through unbiased student focused advising in alignment with a student's personal, career and educational goals and interests with an emphasis on learning and fit, including academic readiness, preparation and student post-high school goals.

Students are encouraged to enroll and complete the most rigorous, quality and relevant high school curriculum a student is ready and prepared to undertake, taking full advantage of the diverse options available throughout middle and high school.

Dual Credit

- Dual credit is one of many opportunities for exposure, experience and preparation for college in high school.
- Dual credit programs provide students with an introduction to college including coursework, study habits, college culture, course content and expectations.
- Washington's public baccalaureate institutions do NOT prioritize one dual credit program over another in the admissions review process.
- Dual credit programs offer a pathway between K-12 and higher education that gives students a strong start in their first year of college.



You are College Material

The single message for all students:

If you want to go to college, are thinking of college or have not considered college, there is a place for you in Washington to go to college and achieve your dreams, attain career credentials, and follow your passion.

For More
Information

Contact Information

Julie Garver
Senior Director of Policy & Academic Affairs
Council of Presidents
360-292-4102
jgarver@councilofpresidents.org
<http://www.councilofpresidents.org>

